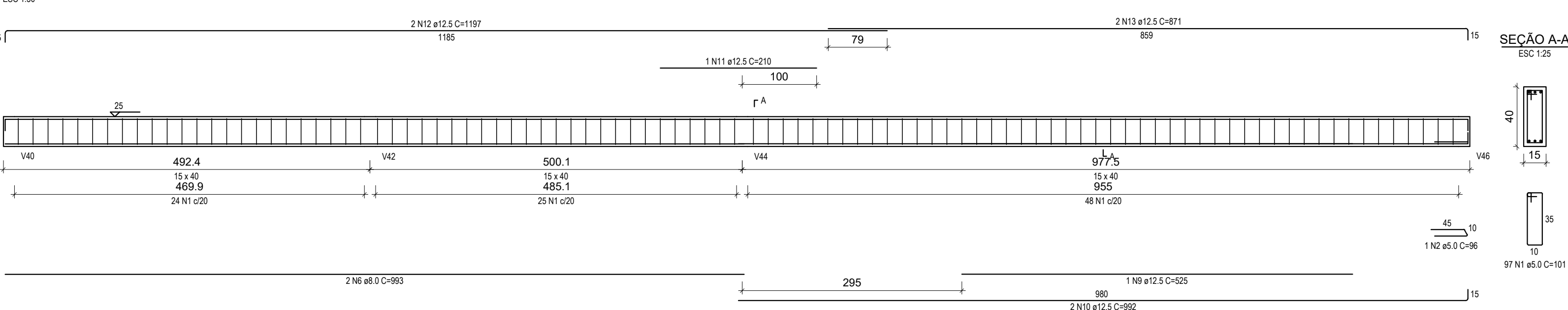
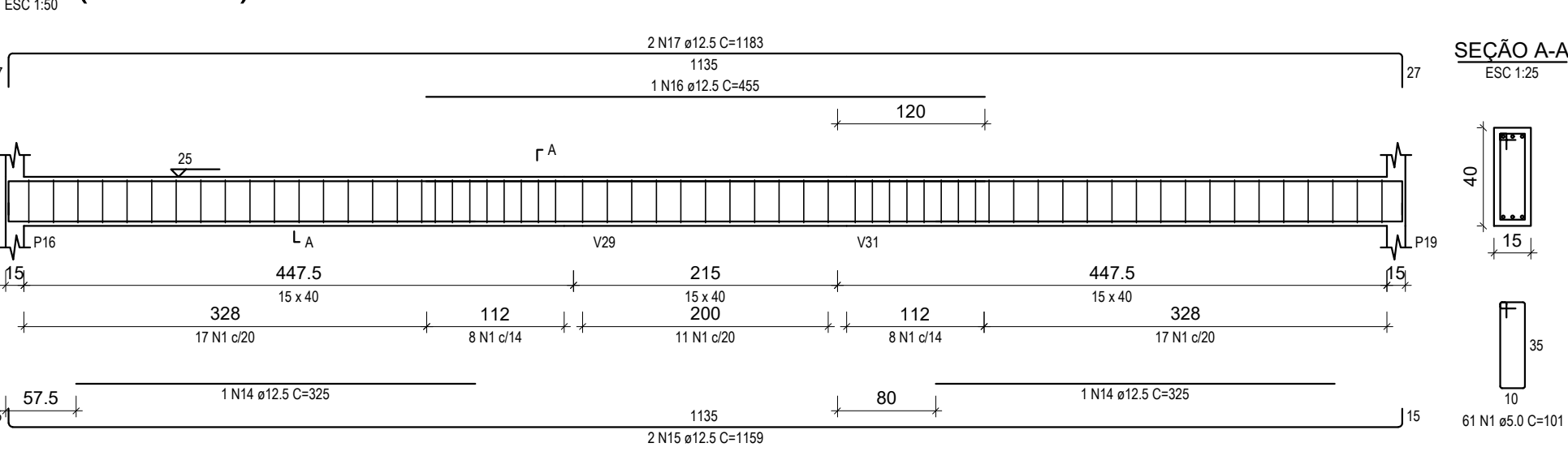


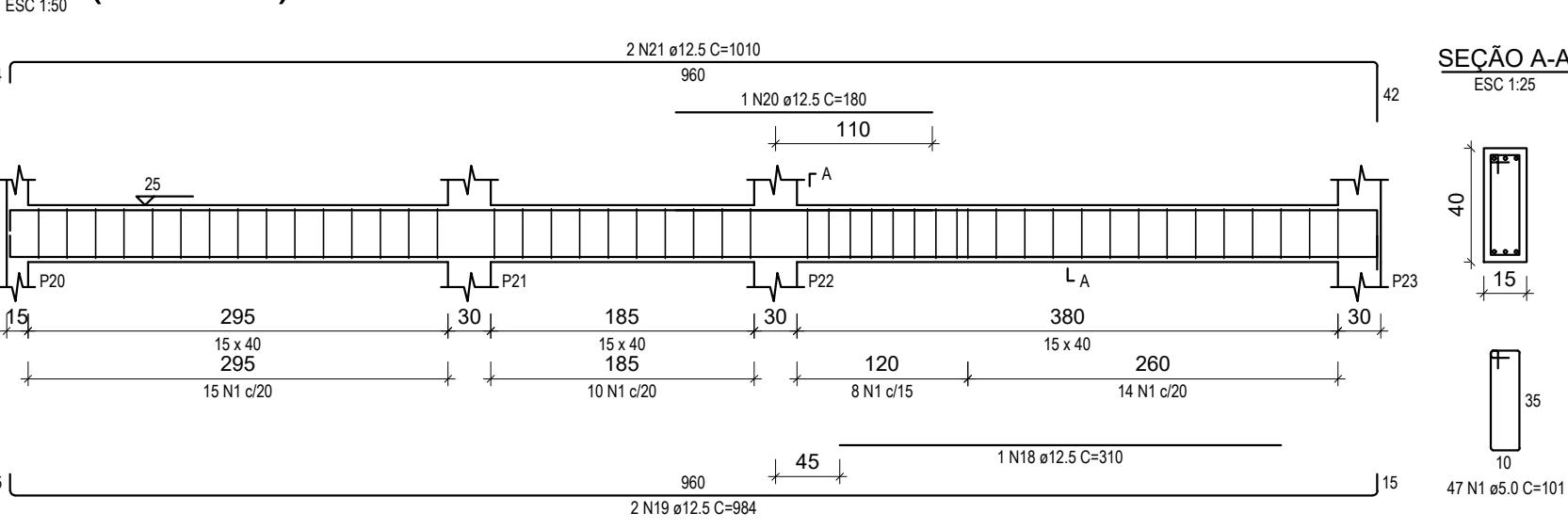
V1 (15 x 40)



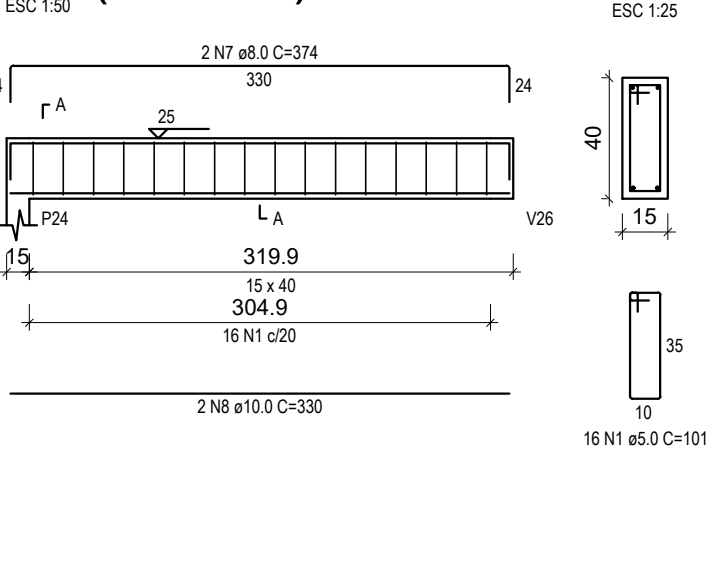
V3 (15 x 40)



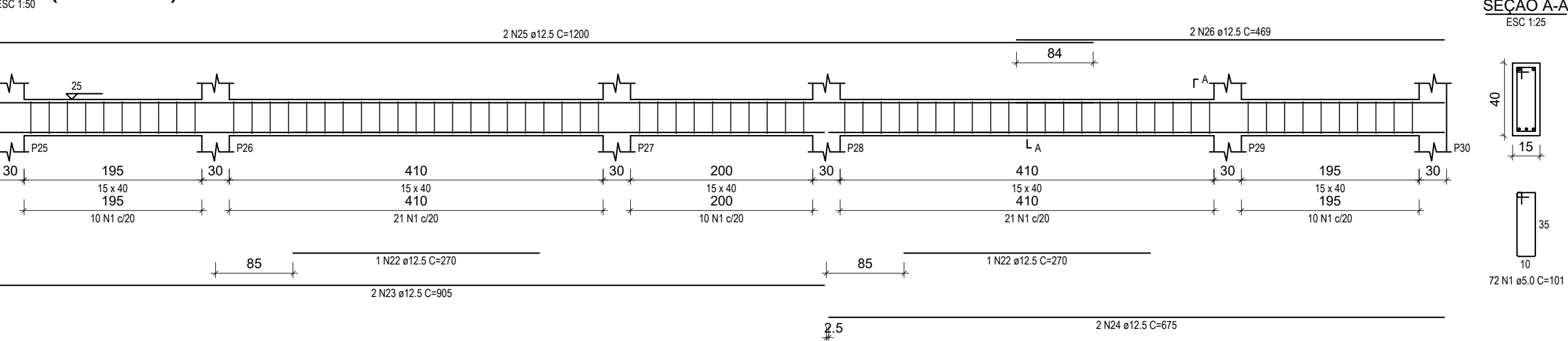
V4 (15 x 40)



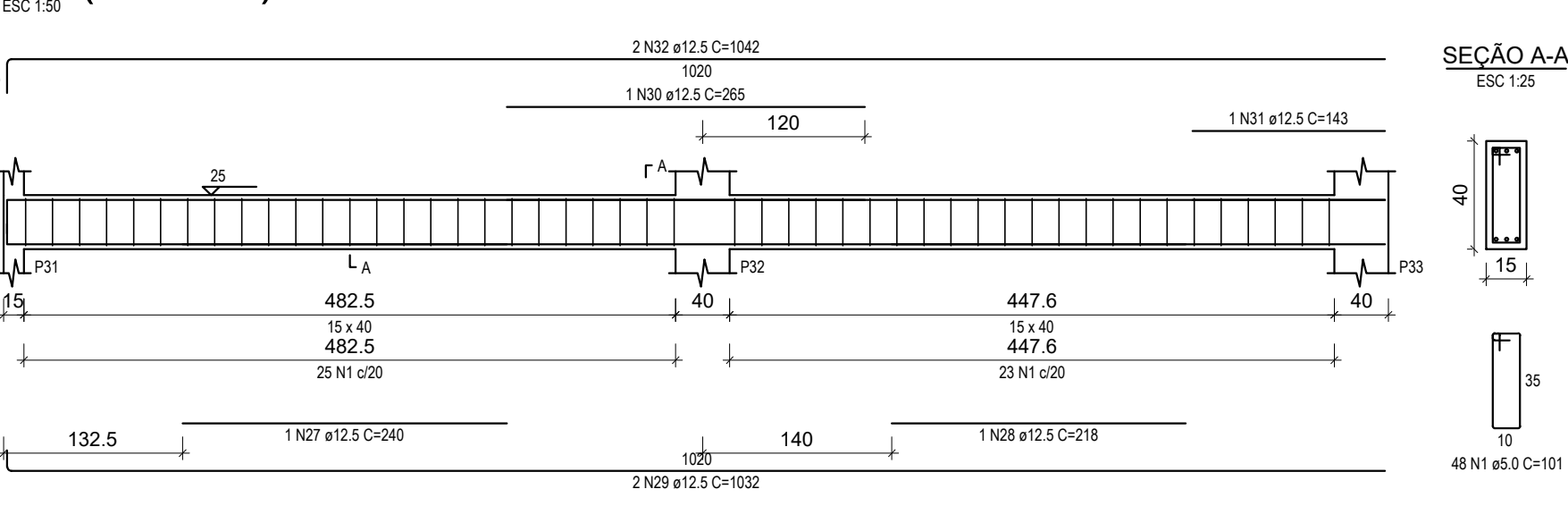
V5 (15 x 40)



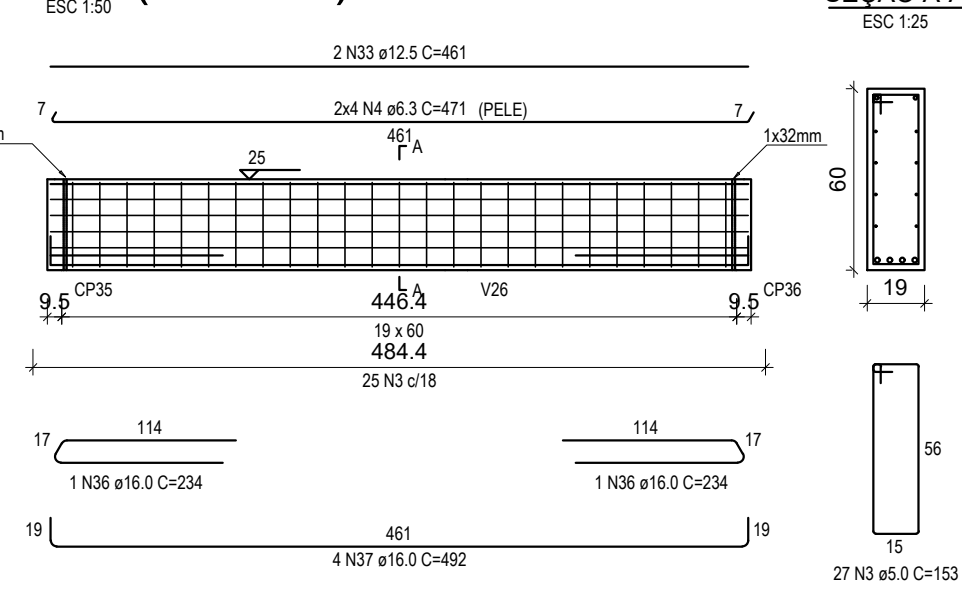
V6 (15 x 40)



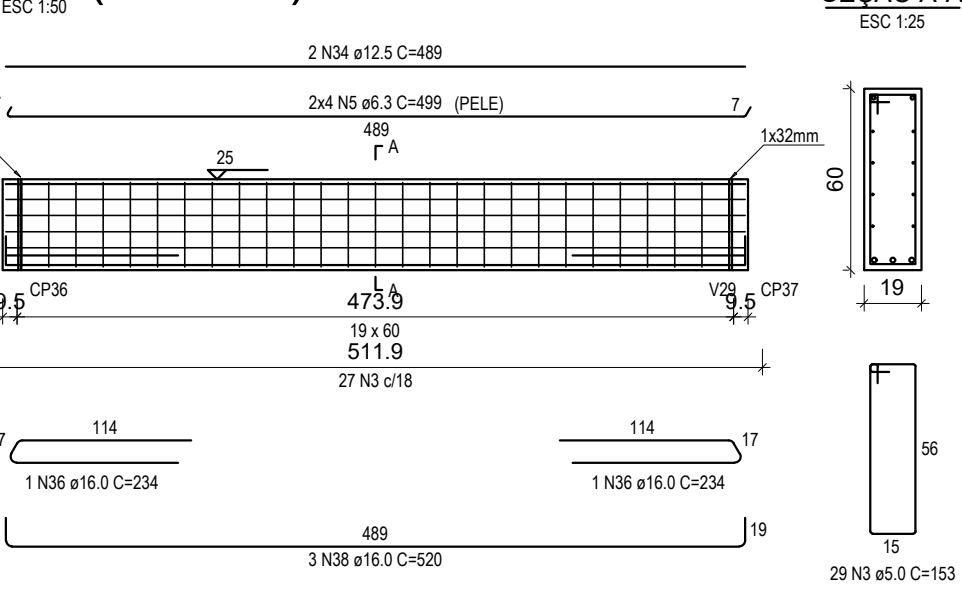
V7 (15 x 40)



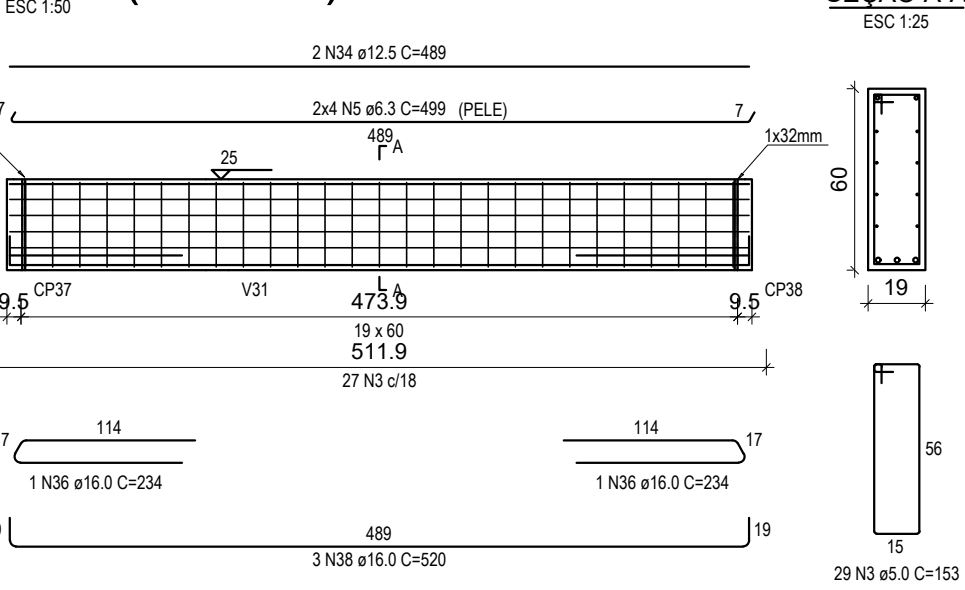
V8 (19 x 60)



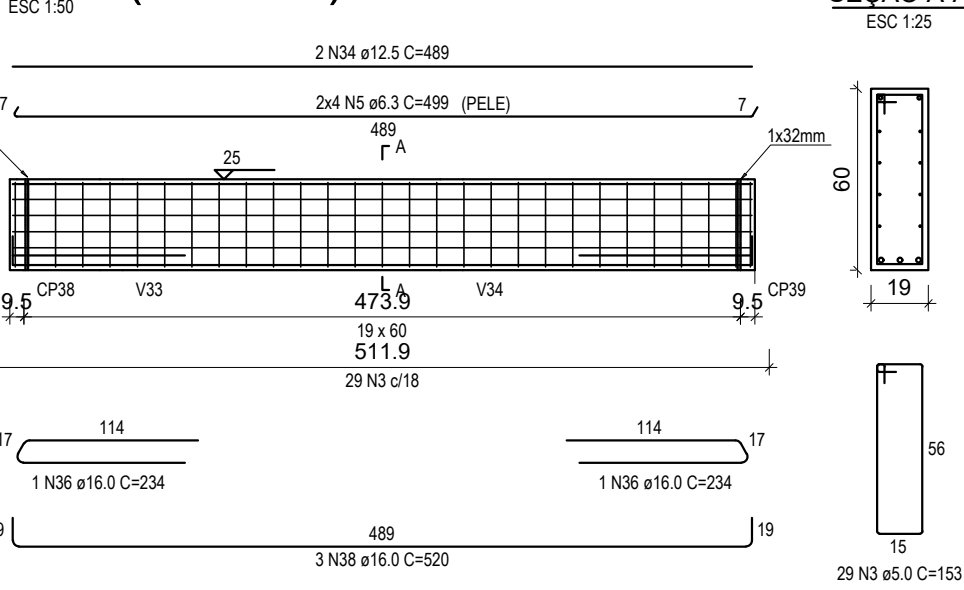
V9 (19 x 60)



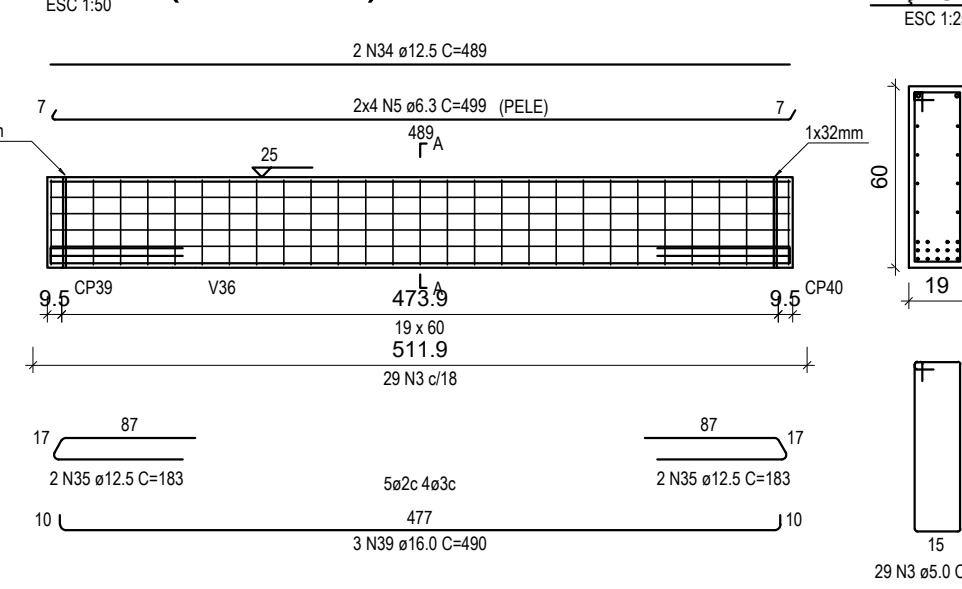
V10 (19 x 60)



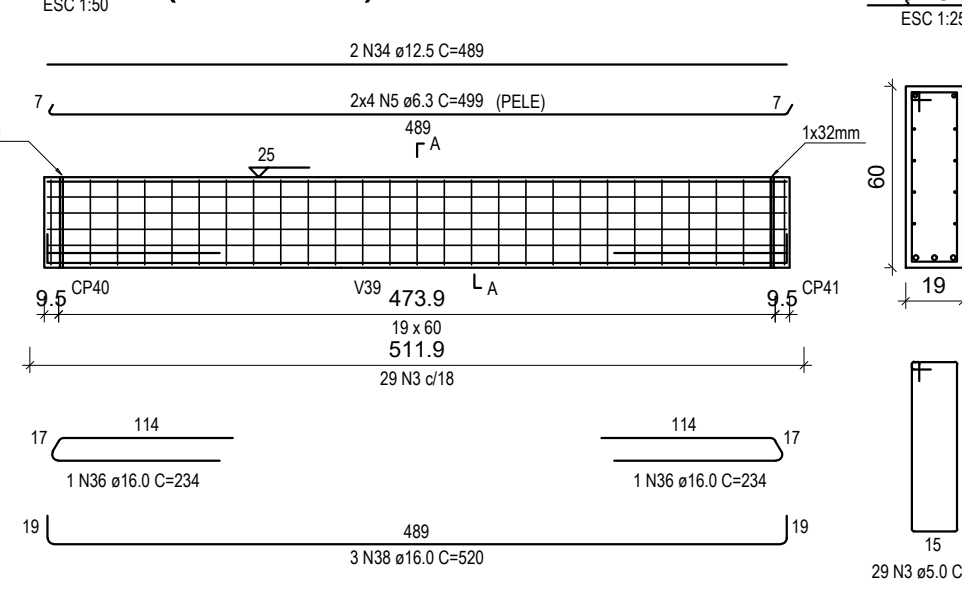
V11 (19 x 60)



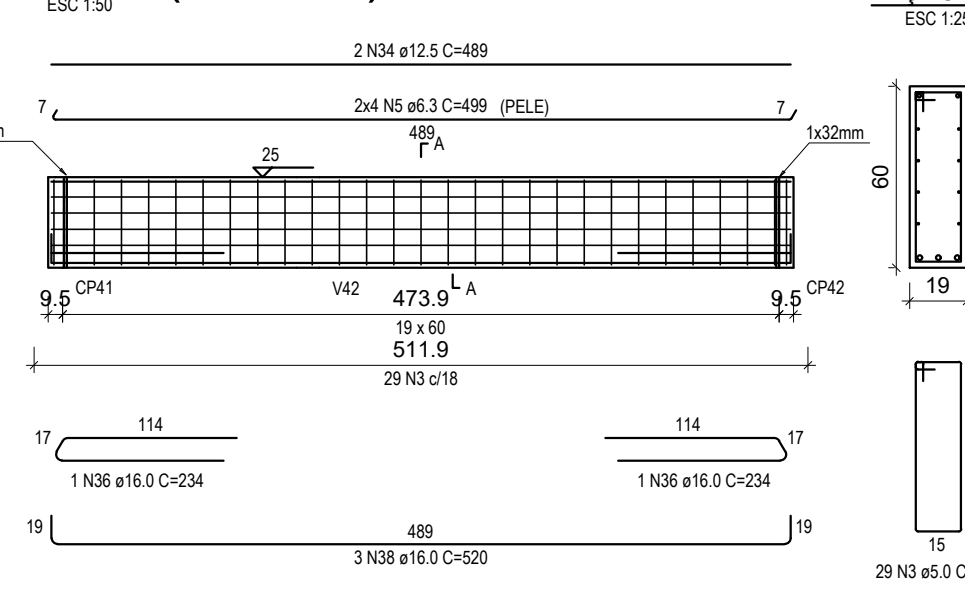
V12 (19 x 60)



V13 (19 x 60)



V14 (19 x 60)



RELAÇÃO DO AÇO

V1	V3	V4
V5	V6	V7
V8	V9	V10
V11	V12	V13
V14		

AÇO	N	DIAM (mm)	QUANT	C.UNIT (cm)	C.TOTAL (cm)
CA60	1	5.0	341	101	34441
	2	5.0	1	96	96
	3	5.0	201	153	30753
	4	6.3	8	471	3768
	5	6.3	48	499	23952
	6	8.0	2	993	1986
	7	8.0	2	374	748
	8	10.0	2	330	660
	9	12.5	1	525	525
	10	12.5	2	992	1984
CA50	11	12.5	1	210	210
	12	12.5	2	1197	2394
	13	12.5	2	871	1742
	14	12.5	2	325	650
	15	12.5	2	1159	2318
	16	12.5	1	455	455
	17	12.5	2	1183	2366
	18	12.5	1	310	310
	19	12.5	2	984	1968
	20	12.5	1	180	180
	21	12.5	2	1010	2020
	22	12.5	2	270	540
	23	12.5	2	905	1810
	24	12.5	2	675	1350
	25	12.5	2	1200	2400
	26	12.5	2	469	938
	27	12.5	1	240	240
	28	12.5	1	218	218
	29	12.5	2	1032	2064
	30	12.5	1	265	265
	31	12.5	1	143	143
	32	12.5	2	1042	2084
	33	12.5	2	461	922
	34	12.5	12	489	5868
	35	12.5	4	183	732
	36	16.0	12	234	2808
	37	16.0	4	492	1968
	38	16.0	15	520	7800
	39	16.0	3	490	1470

RESUMO DO AÇO

AÇO	DIAM (mm)	C.TOTAL (m)	PESO + 10% (kg)
CA50	6.3	277.2	74.6
	8.0	27.3	11.9
	10.0	6.6	4.5
	12.5	367	388.9
	16.0	140.5	243.9
CA60	5.0	652.9	110.7

PESO TOTAL (kg)	
CA50	723.7
CA60	110.7

Volume de concreto (C-30) = 8.12 m³

Área de forma = 114.31 m²

PROJETO ESTRUTURAL

Halla | arquitetura

Avenida Sete de Setembro, 50, Comercial C. Berri
Sala 09 | Centro | Timbó | Santa Catarina
www.hallarq.com

+55 3333 1815 - +55 99214 4008
studiohallarq@gmail.com

CONSTRUÇÃO INSTITUCIONAL EM ALVENARIA - GINÁSIO ESCOLAR
Rodovia Estadual - SC, 416 - São Roque
Timbó - SC

Autor do Projeto: Anderson Halla
Arquiteto e Urbanista - CAU nº 176063-7

Proprietário: Fundo Municipal de Educação - FMDE de Timbó
CNPJ: 32.257.384/0001-19

Escala: Indicada **Revisão:** 00 **Data:** Maio 2020

Especificação: VIGAS IN LOCO FUNDAÇÃO V1-V14